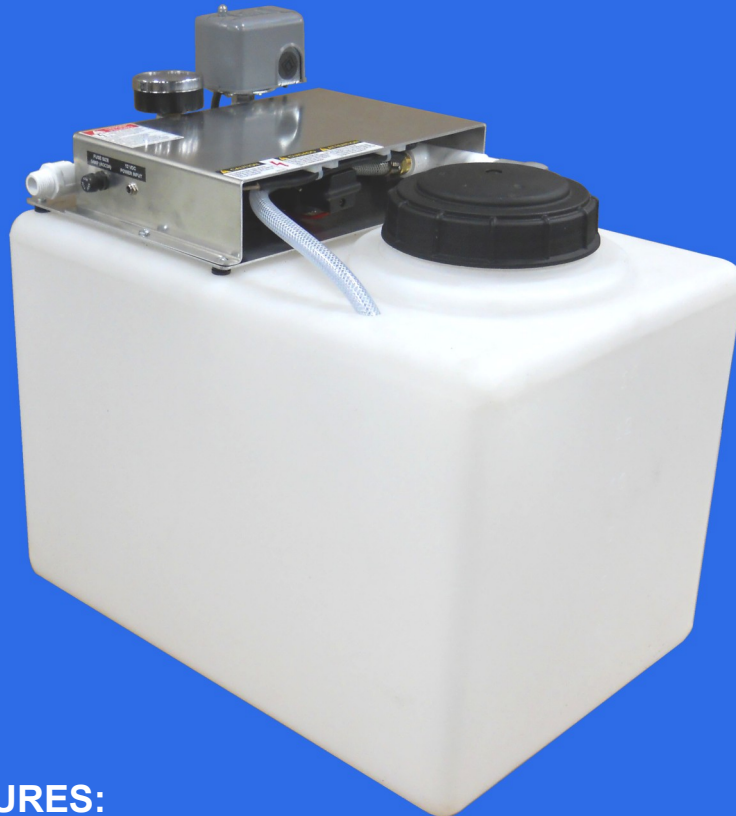


## 16 Gallon Compact Glycol Feed Unit

Glycol feed units are designed to provide an automated supply of water-glycol mix to a cooling or heating closed loop system. Units are factory engineered, assembled and tested with easy plug and run capability. Units are compact, self-contained with a small footprint for ease of installation and operation.



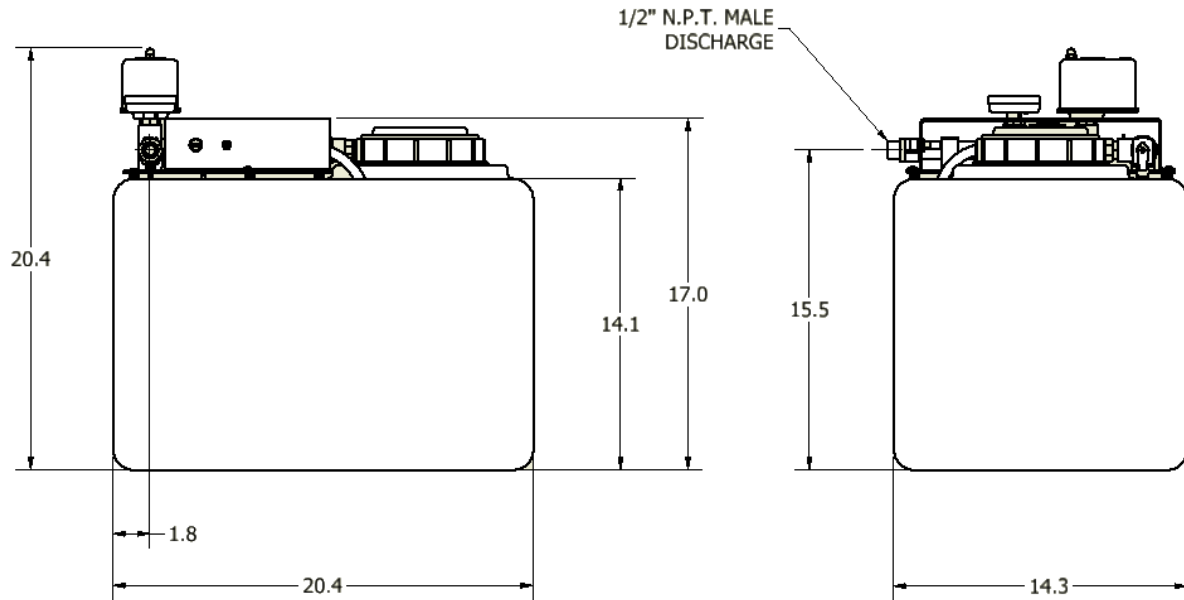
### STANDARD FEATURES:

- **Low Voltage Operation**  
Unit includes a UL listed 115vac to 12vdc power supply with easy access system fuse and power indication light.
- **Pressure Pump**  
Self priming diaphragm pump 12vdc .
- **Low Level Cut-out Float Switch**  
System shut-down to prevent pump from running dry.
- **16 Gallon Tank**  
Tank is heavy duty polyethylene with graduated capacity scale and screw on fill cap.
- **Discharge and Suction Piping**  
Includes suction strainer, industrial style pressure switch, brass check valve, pressure gauge and mixing purge valve.

### SPECIFICATIONS:

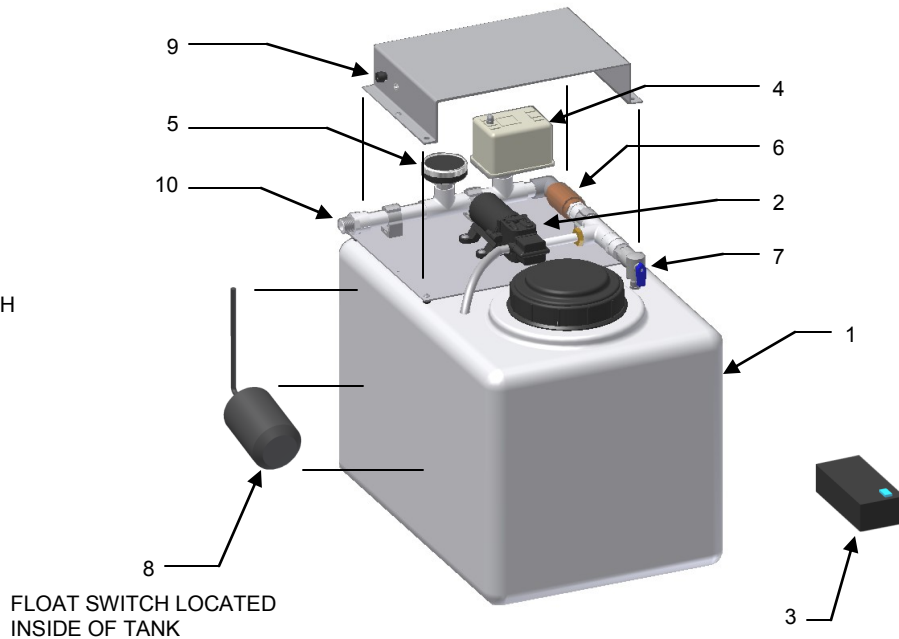
<u>MODEL</u>	<u>SIZE</u>	<u>VOLTAGE</u>	<u>PRESSURE</u>
CG-16-22	Simplex	115vac / 1PH / 60hz	Cut in 12PSI / Cut out 22PSI

## 16 GALLON DIMENSIONAL DRAWING



### UNIT COMPONENTS:

- 1 - 16 GALLON TANK
- 2 - PUMP
- 3 - POWER SUPPLY
- 4 - PRESSURE SWITCH
- 5 - PRESSURE GAUGE
- 6 - CHECK VALVE
- 7 - PURGE & MIX VALVE
- 8 - LOW LEVEL FLOAT SWITCH
- 9 - UNIT FUSE
- 10- 1/2" NPT DISCHARGE



*The specifications contained in this bulletin were effective at the time of publishing. We reserve the right to discontinue products at any time or to change specifications or design without incurring any obligation.*

**Skidmore**

1875 Dewey Ave.  
Benton Harbor MI 49022

TEL - (269) 925-8812  
FAX - (269) 925-7888