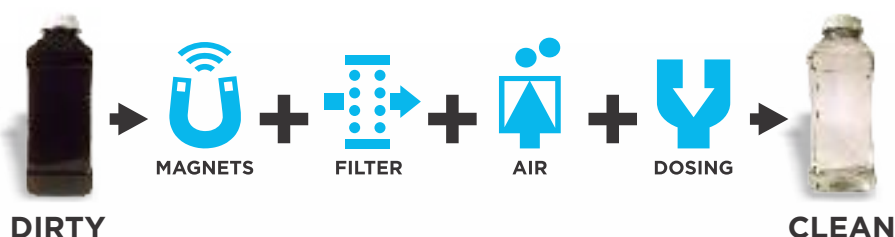




# X-POT<sup>®</sup>

## REDUCE ENERGY COSTS IN HEATING AND COOLING SYSTEMS WITH IMPROVED WATER QUALITY!



**THE ALL-IN ONE  
SIDESTREAM FILTER,  
MAGNETIC FILTER  
AND SHOT FEEDER**



**150 PSI  
WORKING  
PRESSURE  
UP TO  
9,130 Gal  
VOLUME  
SYSTEMS**

**X-POT<sup>®</sup>**  
*Compact*



**150 PSI  
WORKING  
PRESSURE  
UP TO  
22,824 Gal  
VOLUME  
SYSTEMS**

**X-POT6<sup>®</sup>**



**232 PSI  
WORKING  
PRESSURE  
UP TO  
79,886 Gal  
VOLUME  
SYSTEMS**

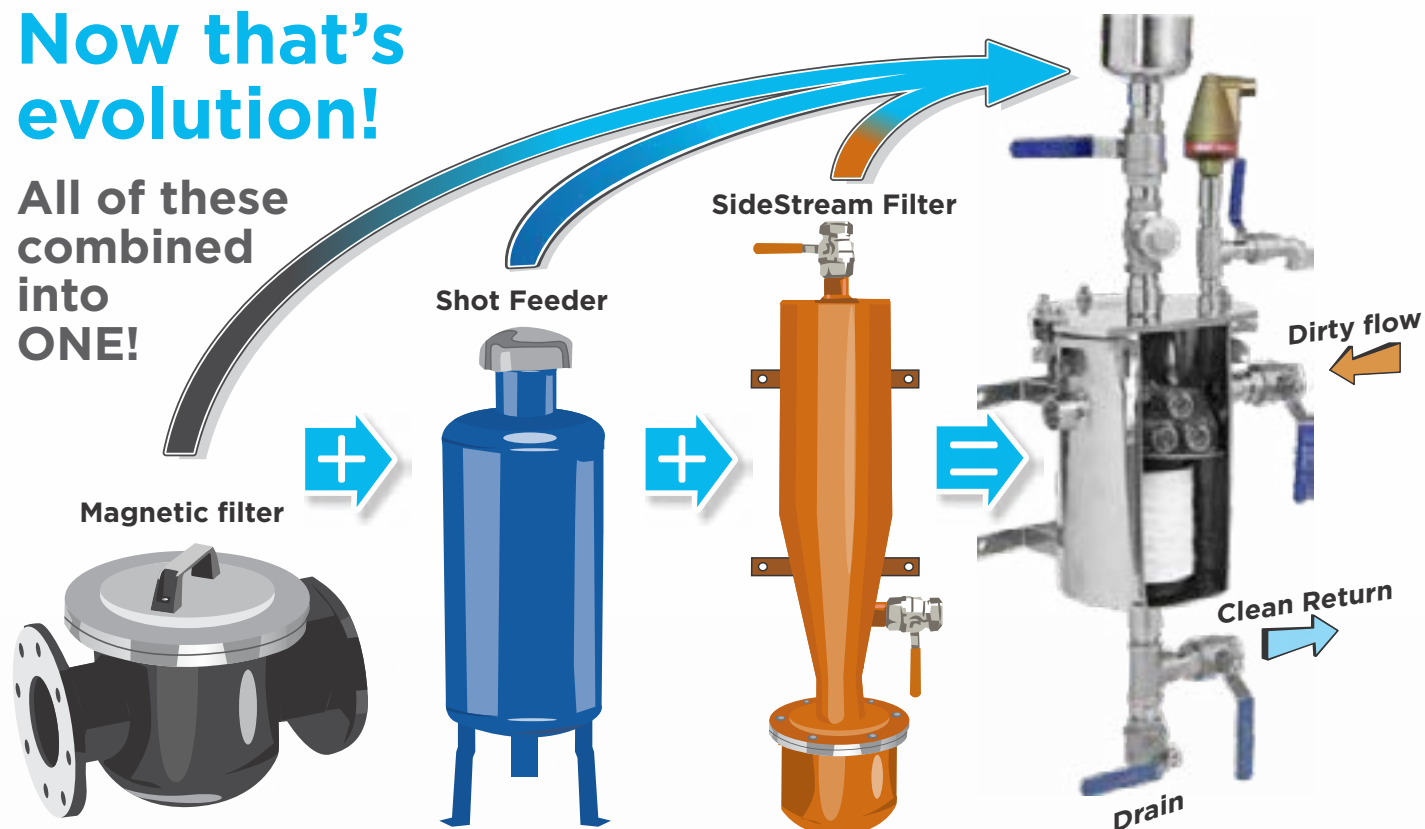
**X-POT<sup>®</sup>** **XP**

# THREE PRODUCTS BUILT INTO ONE

## Full Slipstream Filtration all in a Shot Feeder

**Now that's  
evolution!**

All of these  
combined  
into  
**ONE!**



## FEATURES AND BENEFITS

- ➡ Increased energy efficiency
- ➡ Reduced maintenance costs
- ➡ Supplemental Air Elimination
- ➡ Filtration down to 0.5 micron
- ➡ Simple and very effective
- ➡ Low pressure drop

## X-POT Compact<sup>®</sup> - SIZING CHART

WORKING PRESSURE	SYSTEM VOLUME	SYSTEM BTU (Approx.)	SYSTEM HP (Approx.)
150PSI	UP TO 9,130 GAL	UP TO 9.84MM	UP TO 294 HP

The Skidmore<sup>®</sup> X-POT Compact<sup>®</sup> was specifically designed for smaller commercial heating and cooling water installations up to 9,130 Gal and 150PSI working pressure. The compact size and versatility of this X-POT<sup>®</sup> lends itself to great space savings in mechanical rooms and great value engineering solutions. The Compact incorporates a shot feeder, magnetic filter and a cartridge filter, making it the perfect 'go to' product for mechanical rooms in new and existing applications.

Not only does the X-POT Compact<sup>®</sup> offer full slipstream Filtration down to an industry best 0.5 $\mu$ , but it also enables quick, safe and simple dosing of up to 1.18 Gal of water treatment chemicals into any system.

### X-POT COMPACT<sup>®</sup> SPECIFICATION

(MANUFACTURED & TESTED IN ACCORDANCE WITH PED 2014/68/EU)

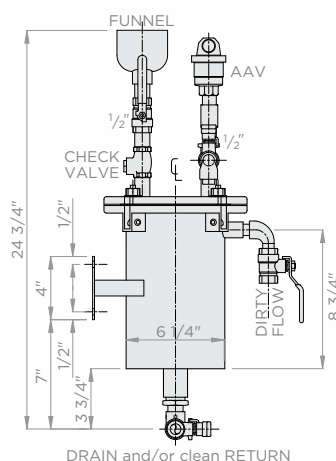
- All stainless steel construction including all 1/2" valves and 1/2" fittings (Except 1/2" AAV)
- Dosing capacity: 1.18 gal
- Factory test pressure: 225 PSI
- Max working pressure: 150 PSI
- Flow rate: Up to 6.3 Gal/min (clean filters)
- Temp range: 32 to 200°F
- Weight: Empty = 38lbs, Full = 51lbs
- ISS magnet grate containing 4 rare earth magnets
- ISS baffle plate
- Compatible with 100, 50, 20, 5 & 0.5 $\mu$  cartridge filters
- Wall mounted

### SKIDMORE<sup>®</sup> X-POT COMPACT<sup>®</sup> FILTER ASSEMBLY

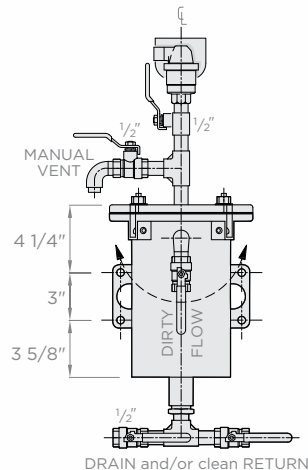
(MANUFACTURED & TESTED IN ACCORDANCE WITH PED 2014/68/EU)

At the heart of the Compact is the twin filtration compartment. In the first compartment all magnetic particles are removed by the 4 powerful rare earth magnets encased within an easy clean stainless steel magnet grate.

The system water then passes through the stainless steel baffle plate into the second compartment where the fine filtration cartridge traps non-magnetic debris. The clean, filtered and polished water then flows back into the system.

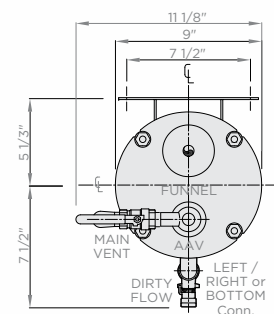


Side View



Front View

Max Working Pressure - 150 PSI  
Dosing Volume - 1.18 gal (US)  
Filtration Rate - 1.3 - 6.3Gal/min  
Temp Range - 32-200 F  
Connections - 1/2" NPT  
Wall Mounted - Yes



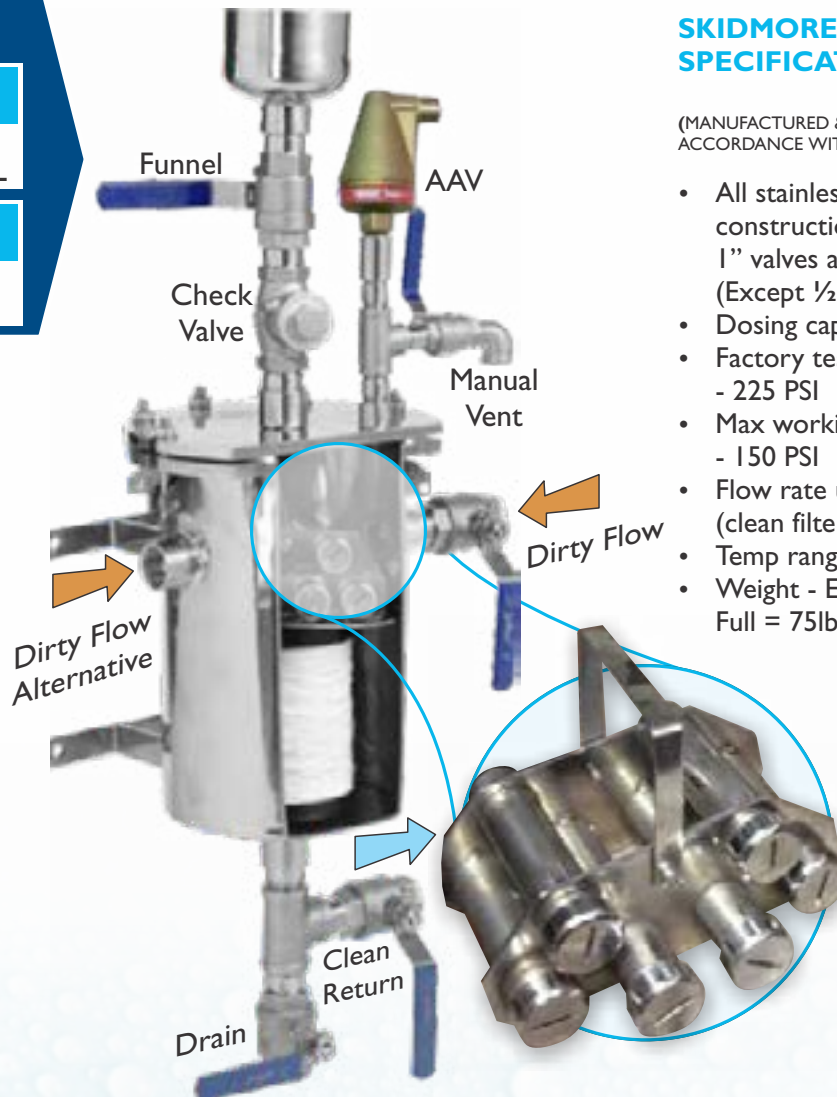
Plan View



## X-POT6<sup>®</sup> SIZING CHART

WORKING PRESSURE	SYSTEM VOLUME
150PSI	UP TO 22,824 GAL
SYSTEM BTU (Approx.)	SYSTEM HP (Approx.)
UP TO 24.6MM	UP TO 735 HP

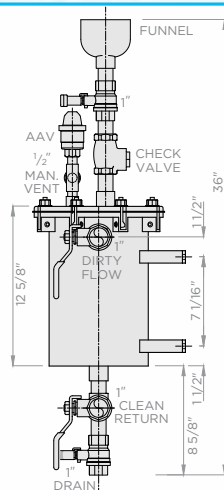
The Skidmore<sup>®</sup> X-POT6<sup>®</sup> contains 6 rare earth magnets encased within a stainless steel magnet grate for easy removal and cleaning. Along with the magnets, the cartridge filter offers superior cleaning and exceptional retention of system debris. The X-POT6<sup>®</sup> also includes supplemental air removal via the on-board AAV, making it advantageous for all systems.



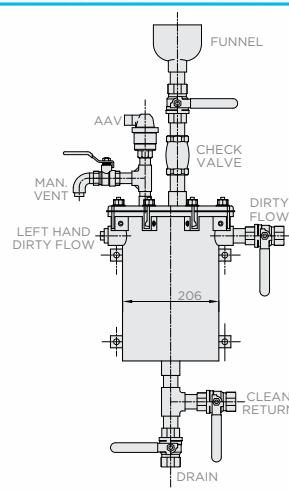
## SKIDMORE<sup>®</sup> X-POT6<sup>®</sup> SPECIFICATION

(MANUFACTURED & TESTED IN ACCORDANCE WITH PED 2014/68/EU)

- All stainless steel construction including all 1" valves and 1" fittings (Except 1/2" AAV)
- Dosing capacity - 2.6gal
- Factory test pressure - 225 PSI
- Max working pressure - 150 PSI
- Flow rate up to 15.8 Gal/min (clean filters)
- Temp range: 32 to 200°F
- Weight - Empty = 47lbs, Full = 75lbs
- 1 SS magnet grate containing 6 rare earth magnets.
- 1 SS baffle plate
- Compatible with 100, 50, 20, 5 & 0.5μ cartridge filters
- Wall mounted

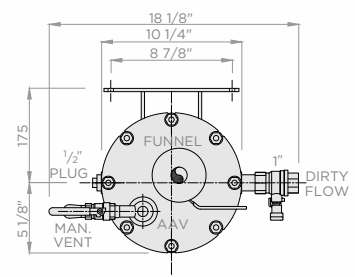


Side View



Front View

Max Working Pressure - 150 PSI  
Dosing Volume - 2.6 Gal (US)  
Filtration Rate - 1.3 - 15.8 Gal/min  
Temp Range - 32-200 F  
Connections - 1" NPT  
Wall Mounted - Yes



Plan View

### X-POT XP® - SIZING CHART

WORKING PRESSURE	SYSTEM VOLUME	SYSTEM BTU (Approx.)	SYSTEM HP (Approx.)
232PSI	UP TO 79,886 GAL	UP TO 86.12MM	UP TO 2,572 HP

The Skidmore® X-POT XP® is the new industry benchmark for slipstream Filtration. Designed for the large commercial heating and cooling water installations up to 79,886gal in volume.

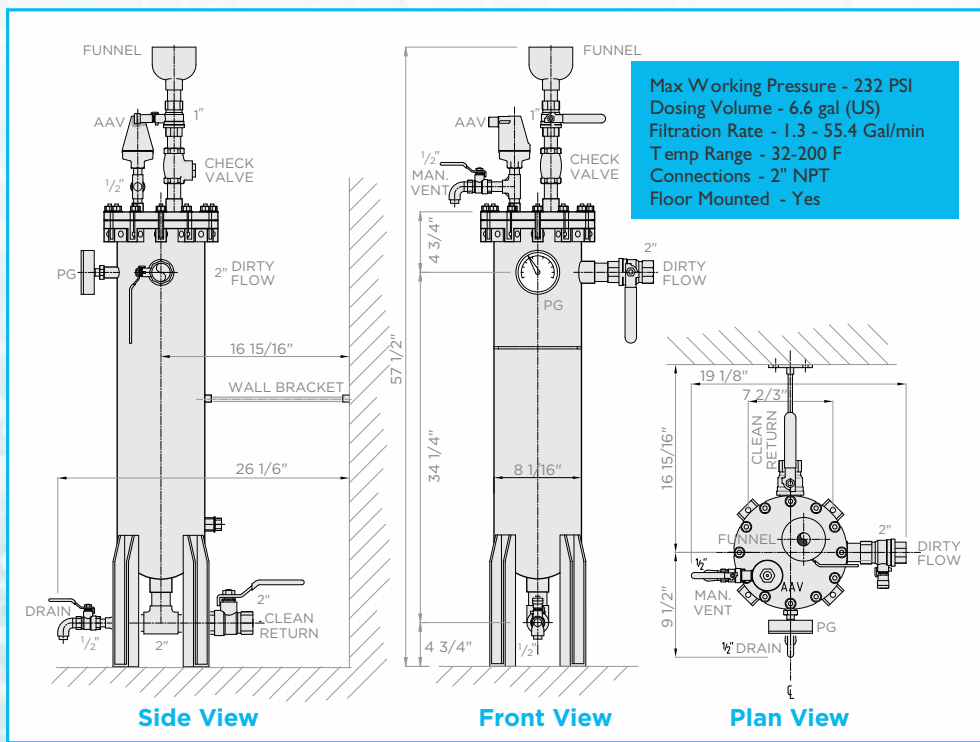
The X-POT XP® not only has great pulling power with its 13 rare earth magnets, but also contains a large capacity bag filter which captures non-magnetic material and filters down to 1.0µ. Virtually nothing escapes the XP.

Product design requires minimal maintenance and allows for simple filter replacement.

### SKIDMORE® X-POT XP® SPECS

(MANUFACTURED & TESTED IN ACCORDANCE WITH PED 2014/68/EU)

- All stainless steel construction including all 2" Valves and 2" fittings (Except 3/4" AAV)
- Dosing capacity - 6.6gal
- Factory test pressure - 360 PSI
- Max working pressure - 232 PSI
- Flow rate up to 55.4Gal/min
- Temp range: 32 to 200°F
- Weight - Empty = 100lbs, Full = 188lbs
- 2 SS magnet grates containing 13 rare earth magnets.
- 1 SS baffle plate
- Compatible with 100, 50, 25, 5 & 1µ filter bags
- Floor standing



## X-PO10®

Superior all-round system protection up to 190°F



### Benefits of X-PO10:

- Unbeatable heating/chilled/condenser water system protection
- Super concentrate formula - Treats up to 180% more volume than competing brands
- Lowers CO<sub>2</sub> emissions
- Increased system performance and lifespan
- Exceptional protection in both hard and soft water systems
- Effective up to 190°F
- Environmentally friendly
- Neutral pH formula
- Can be used on both metal and plastic pipework

1.25 Gal  
58760-P010  
5.0 Gal  
58760-P010-5

## X-PO35®

Sanitizer and cleanser without the need to flush



### Benefits of X-PO35:

- Unbeatable sanitizer and cleanser for heating, chilled & condenser water systems
- Lifts and mobilises contaminants and bio-films until captured by an X-POT®
- Cleans and passivates bare metal surfaces
- Prevents under-deposit corrosion
- Super concentrate formula
- 1 1/4 Gallon treats up to 350 Gallons of system vol.
- Remains within the system
- No need to drain after treating
- Effective up to 190°F

1.25 Gal  
58760-P035  
5.0 Gal  
58760-P035-5

TEST KITS FOR X-PO35® NON-FLUSH SANITIZER AND CLEANSER AVAILABLE FROM SKIDMORE® MODEL 58761-TEST



## FILTERS A RANGE OF X-POT® CARTRIDGE AND BAG FILTERS UNIQUELY SUITED TO YOUR SPECIFIC NEEDS

Cartridge filters designed for the X-POT® vessels have been manufactured to meet the challenging environment they will be used in, giving the maximum through-put and particle retention with the lowest pressure drop. Filter cartridges for the X-POT Compact® and X-POT6® as well as bag filters for the he X-POT XP® are available in a range of micron sizes.

### REPLACEMENT FILTERS

#### CARTRIDGE FILTERS

X-POT COMPACT  
X-POT6  
100µ 58760-F100  
50µ 58760-F50  
20µ 58760-F20  
5µ 58760-F5  
0.5µ 58760-F0.5

#### BAG FILTERS

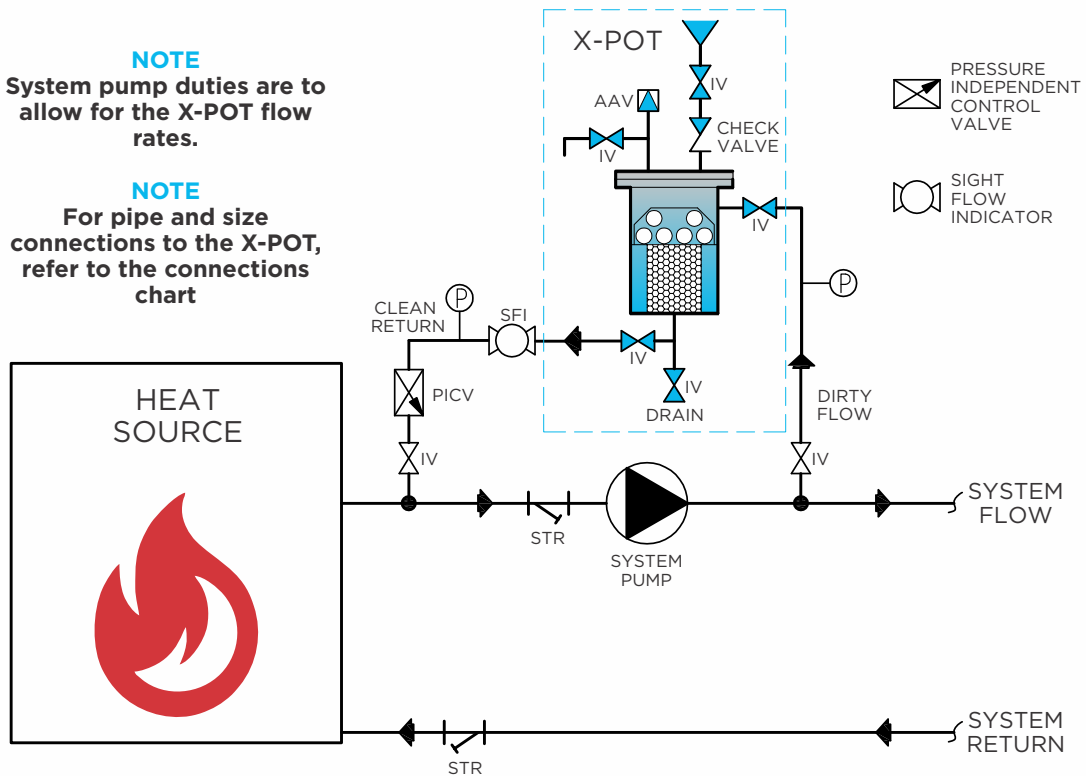
X-POT XP  
100µ 58762-F100  
50µ 58762-F50  
25µ 58762-F25  
5µ 58762-F5  
1µ 58762-F1

All replacement filters available through Skidmore®

## HEATING SYSTEMS

**NOTE**  
System pump duties are to allow for the X-POT flow rates.

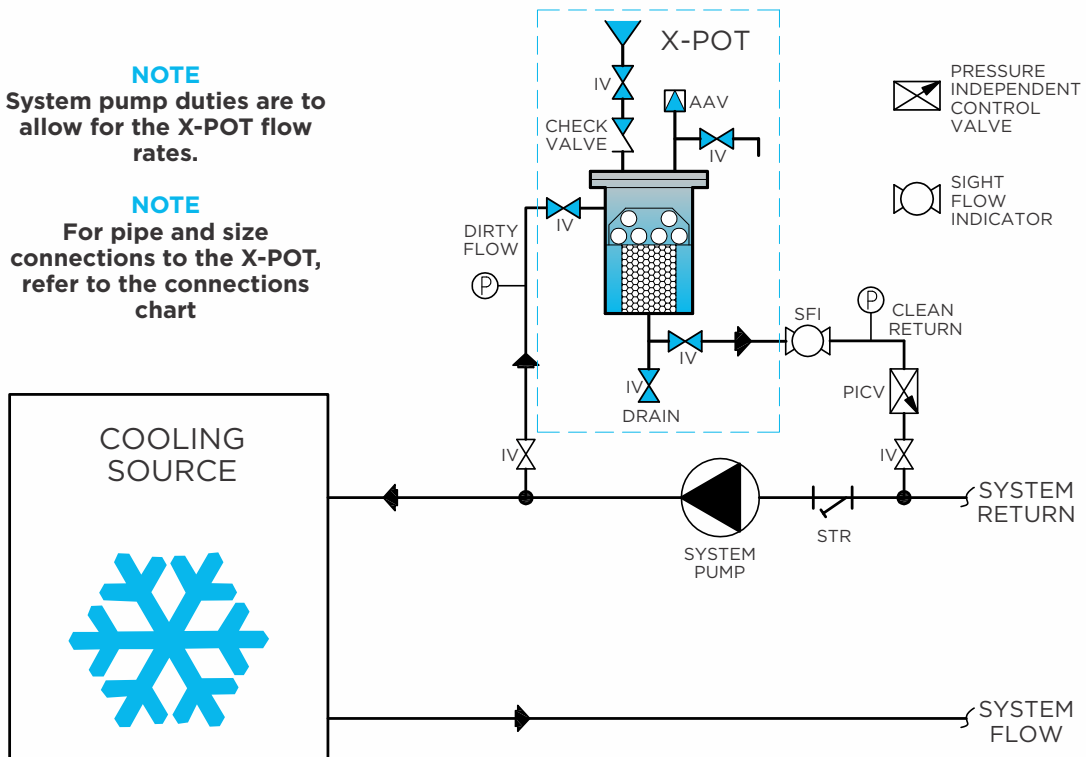
**NOTE**  
For pipe and size connections to the X-POT, refer to the connections chart



## COOLING SYSTEMS

**NOTE**  
System pump duties are to allow for the X-POT flow rates.

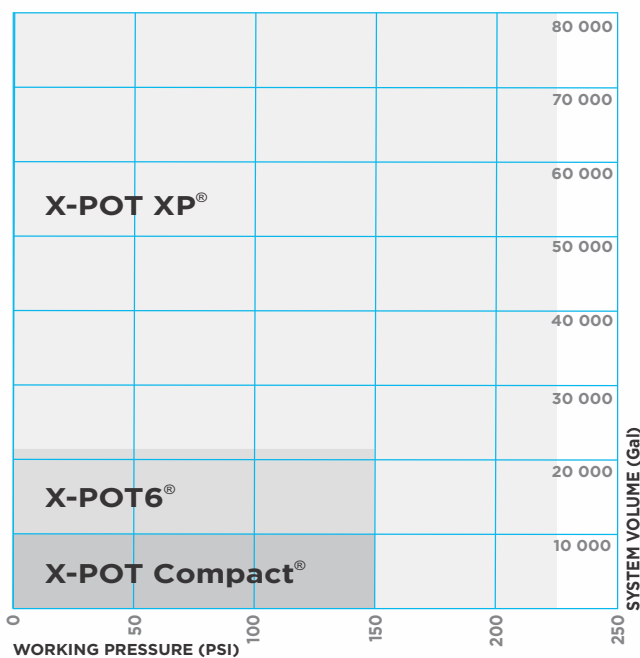
**NOTE**  
For pipe and size connections to the X-POT, refer to the connections chart





## QUICK SIZING CHART

THE SYSTEM VOLUME AND WORKING PRESSURE DETERMINE WHICH X-POT MODEL IS TO BE CONSIDERED.



Up to 9,100 GAL & 150PSI **X-POT Compact®**

Up to 22,800 GAL & 150PSI **X-POT6®**

Above 22,800 GAL & 150PSI **X-POT XP®**

## PIPE CONNECTIONS TO AND FROM X-POT

Connections to the X-POT® are determined by the total system volume being circulated through the X-POT in a 24 Hour period.

$$\frac{\text{SYSTEM VOLUME}}{1,400} = \text{Gallons/min}$$

1.3 - 6.3 Gal/min =  $\frac{1}{2}$ " Connection

6.3 - 9.5 Gal/min =  $\frac{3}{4}$ " Connection

9.5 - 15.8 Gal/min = 1" Connection

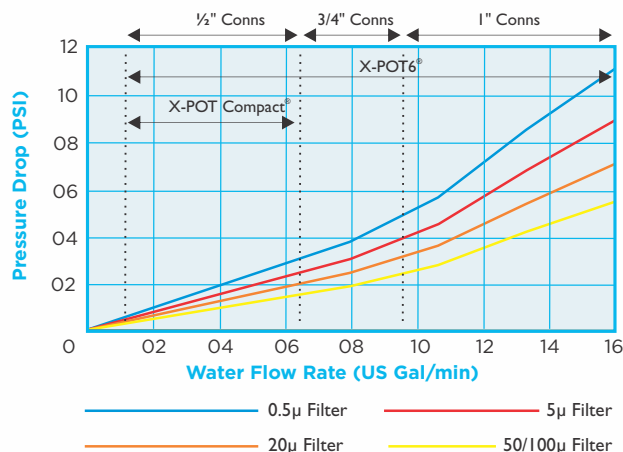
15.8 - 19 Gal/min =  $1\frac{1}{4}$ " Connection

19 - 33.2 Gal/min =  $1\frac{1}{2}$ " Connection

33.2 - 55.4 Gal/min = 2" Connection

## PRESSURE DROP

Flow DP of X-POT Compact & 6 Cartridge Filters and Grate



NOTE - Choice of X-POT is dependent upon system working pressure and system volume.

## ESTIMATING THE SYSTEM VOLUME

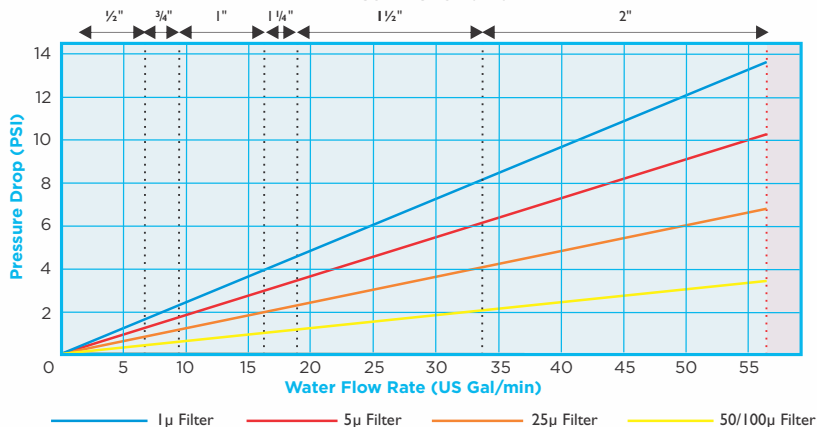
If you don't know the system volume, here is a rough 'rule of thumb' guide:

1 Million BTU's = 927.6 US Gallons

OR

1 HP = 31.05 US Gallons

Flow DP of X-POT XP® Bag Filters including Magnet Grate  
CONNECTION SIZES



NOTE - Choice of X-POT is dependent upon system working pressure and system volume.