

Simplex 100 Gallon Glycol Feed Unit

Glycol feed units are designed to provide an automated supply of water-glycol mix to a cooling or heating closed loop system. Units are factory engineered, assembled and tested with easy plug and run capability. Units are compact, self-contained with a small footprint for ease of installation and operation.



STANDARD FEATURES:

- **UL / CUL 508A Control Panel**
Factory wired including type 4x enclosure. Audible alarm for low level. Selector switches with pilot lights for power, pump and alarm. 9' incoming power cord with plug.
- **Pressure Pump**
1/3HP 2 GPM @ 100PSI with built-in inlet strainer.
- **Low Level Cut-out Float Switch**
System shut-down to prevent pump from running dry with visual and audible alarm including dry contacts for remote alarm.
- **100 Gallon Tank**
Tank is heavy duty polyethylene with graduated capacity scale, removable cover and is supported on a powder coated structural steel support stand.
- **Brass Discharge and Suction Piping**
Includes high pressure relief valve, pressure switch, check valve, pressure gauge and suction isolation valve.

OPTIONS:

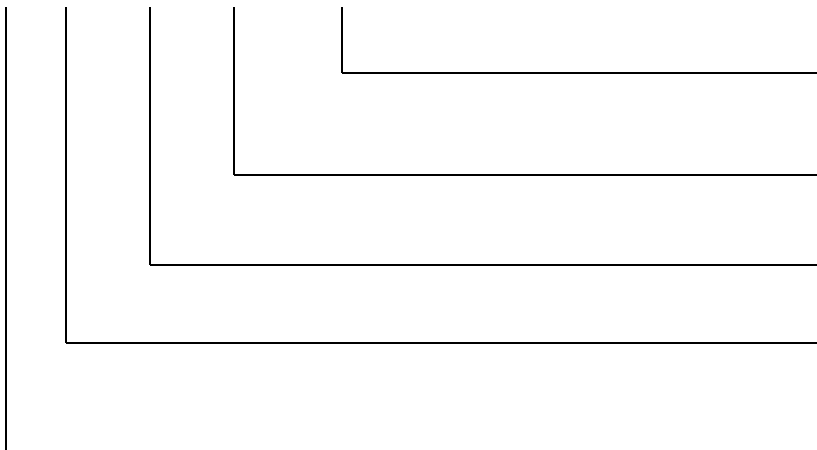
- **AMT:** Timed mixing loop
- **ET:** Expansion tank 2 gallon
- **SET:** Expansion tank 2 gallon stainless steel
- **HFP:** High flow pump 4.5 GPM @ 100PSI
- **HLA:** High level alarm
- **ALT:** Pump alternation (duplex units only)
- **ET-PRV:** Expansion tank with PRV 8-50 psi

SPECIFICATIONS:

<u>MODEL</u>	<u>SIZE</u>	<u>HP</u>	<u>VOLTAGE</u>	<u>PRESSURE</u>
S-100-100-2-PEFS	Simplex	(1) 1/3hp	110v / 1PH / 60hz	Cut in 10-45 PSI / 10-30 PSI Differential

Model Number

S-100-100-2-PEFS



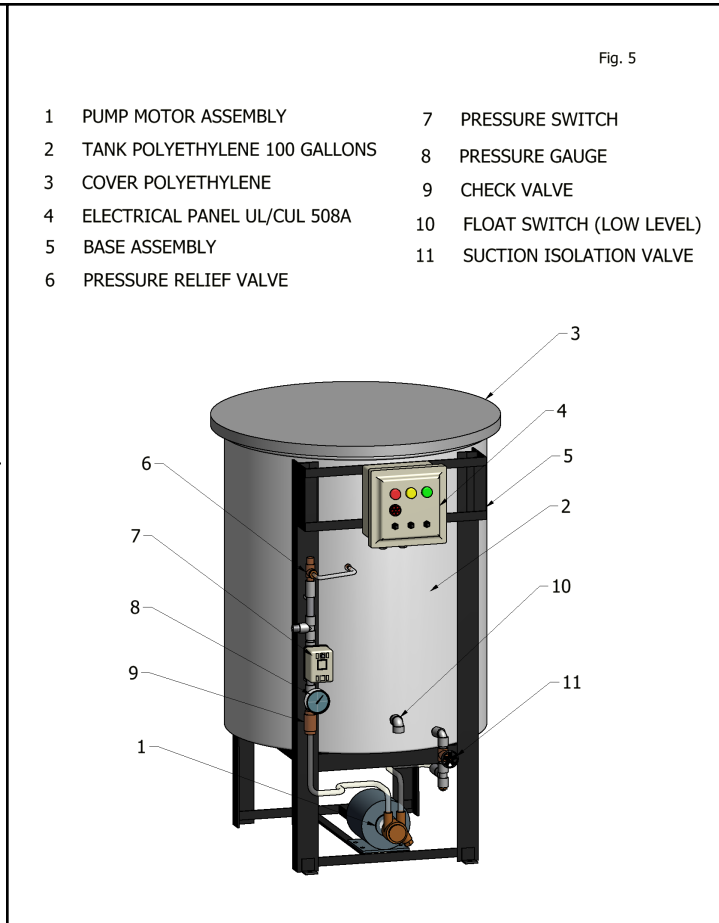
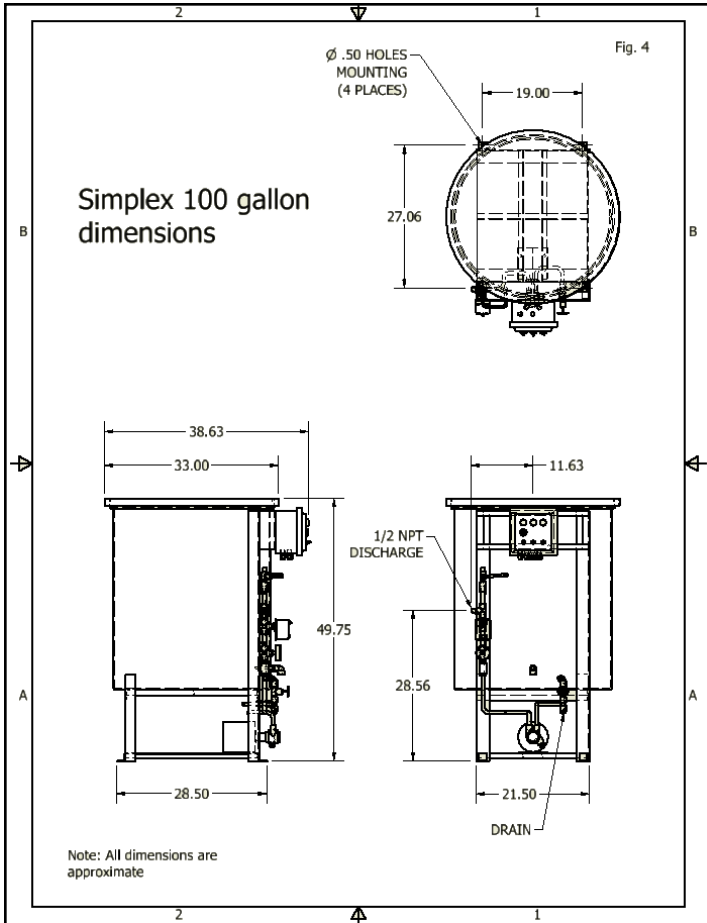
SYSTEM
PEFS - Polyethylene Feed System

PUMP
2 - 1/3 hp pump, 2 GPM

PRESSURE RANGE
100 - 100 PSIG

TANK SIZE
100 - 100Gallon Polyethylene Tank

UNIT STYLE
S - Simplex Pump Station



The specifications contained in this bulletin were effective at the time of publishing. We reserve the right to discontinue products at any time or to change specifications or design without incurring any obligation.



1875 Dewey Ave.
 Benton Harbor MI 49022

TEL - (269) 925-8812
 FAX - (269) 925-7888
www.skidmorepump.com